

TANDY®

CAT. NO. 25-1110

1000

DEMON ATTACK®



IMAGIC

TERMS AND CONDITIONS OF SALE AND LICENSE OF TANDY
COMPUTER SOFTWARE PURCHASED AND LICENSED FROM RADIO
SHACK COMPANY-OWNED COMPUTER CENTERS, RETAIL STORES
AND RADIO SHACK FRANCHISEES OR DEALERS AT THEIR
AUTHORIZED LOCATIONS

LIMITED WARRANTY

TANDY Software is licensed on an "AS IS" basis, without warranty. The original CUSTOMER'S exclusive remedy, in the event of a Software manufacturing defect, is its repair or replacement within thirty (30) calendar days of the date of the Radio Shack sales document received upon license of the Software. The defective Software shall be returned to a Radio Shack Computer Center, a Radio Shack retail store, a participating Radio Shack franchisee or a participating Radio Shack dealer along with the sales document.

EXCEPT AS PROVIDED HEREIN, RADIO SHACK MAKES NO EXPRESS WARRANTIES, AND ANY IMPLIED WARRANTY OF MERCHANTABILITY OR FITNESS FOR A PARTICULAR PURPOSE IS LIMITED IN ITS DURATION TO THE DURATION OF THE WRITTEN LIMITED WARRANTIES SET FORTH HEREIN.

Some states do not allow limitations on how long an implied warranty lasts, so the above limitation(s) may not apply to CUSTOMER.

RADIO SHACK SHALL HAVE NO LIABILITY OR RESPONSIBILITY TO CUSTOMER OR ANY OTHER PERSON OR ENTITY WITH RESPECT TO ANY LIABILITY, LOSS OR DAMAGE CAUSED OR ALLEGED TO BE CAUSED DIRECTLY OR INDIRECTLY BY "SOFTWARE" LICENSED OR FURNISHED BY RADIO SHACK, INCLUDING, BUT NOT LIMITED TO, ANY INTERRUPTION OF SERVICE, LOSS OF BUSINESS OR ANTICIPATORY PROFITS OR INDIRECT, SPECIAL, OR CONSEQUENTIAL DAMAGES.

Some states do not allow the limitation or exclusion of incidental or consequential damages, so the above limitation(s) or exclusion(s) may not apply to CUSTOMER.

SOFTWARE LICENSE

RADIO SHACK grants to CUSTOMER a non-exclusive, paid-up license to use the Tandy Software on **one** computer, subject to the following provisions:

- A. Except as otherwise provided in this Software License, applicable copyright laws shall apply to the Software.
- B. Title to the medium on which the Software is recorded is transferred to CUSTOMER, but not title to the Software.
- C. CUSTOMER shall not use, make, manufacture, or reproduce copies of Software except for use on **one** computer and as is specifically provided in this Software License. Customer is expressly prohibited from disassembling the Software.
- D. CUSTOMER is permitted to make additional copies of the Software **only** for backup or archival purposes or if additional copies are required in the operation of **one** computer with the Software, but only to the extent the Software allows a backup copy to be made.
- E. All copyright notices shall be retained on all copies of the Software.

The warranties granted herein give the **original** CUSTOMER specific legal rights, and the **original** CUSTOMER may have other rights which vary from state to state.



DEMON ATTACK®

Demon Attack Program:
©1984, Imagic
Licensed to Tandy Corporation.
All Rights Reserved.

All Portions of this software are copyrighted and are the proprietary and trade secret information of Tandy Corporation and/or its licensor. Use, reproduction or publication of any portion of this material without the prior written authorization by Tandy Corporation is strictly prohibited.

Demon Attack Program Manual:
©1984, Tandy Corporation
All Rights Reserved.

Reproduction of use, without express written permission from Tandy Corporation and/or its licensor, of any portion of this manual is prohibited. While reasonable efforts have been taken in the preparation of this manual to assure its accuracy, Tandy Corporation assumes no liability resulting from any errors or omissions in this manual, or from the use of the information contained herein.

INTRODUCTION

You are protecting the planet against an insidious band of demons, all determined to destroy you and invade your earth home. Equipped with one laser gun and two spares, you must shoot and kill a wave of diabolical creatures swarming through the skies before they destroy your supply of laser guns and ultimately turn their rays on you.

If you get past the first onrush of demons, you will be given an extra laser gun to face more fiendish beasts. You may also see demons that multiply and split in two when you hit them and fleet phantom demons that appear and disappear out of thin air.

But the most dreaded creature of all is the Cyclopean demon leader with a huge, ugly mouth and a single eye in its forehead. You must first destroy the demons and the safety shield protecting the demon leader. Only then, can you try to aim and shoot out the eye of this monster that gives birth to thousands of demons.

LOADING INSTRUCTIONS

1. If your TANDY 1000 is off, insert the disk in Drive A and turn on the computer. The game will come up by itself.
2. If the computer is on, insert the disk and press **CTRL**, **ALT**, and **DEL** keys simultaneously to reset.

CHOOSING THE LEVEL OF PLAY

When the title screen appears, select the number of players and the laser firing mode as follows.

Press for:

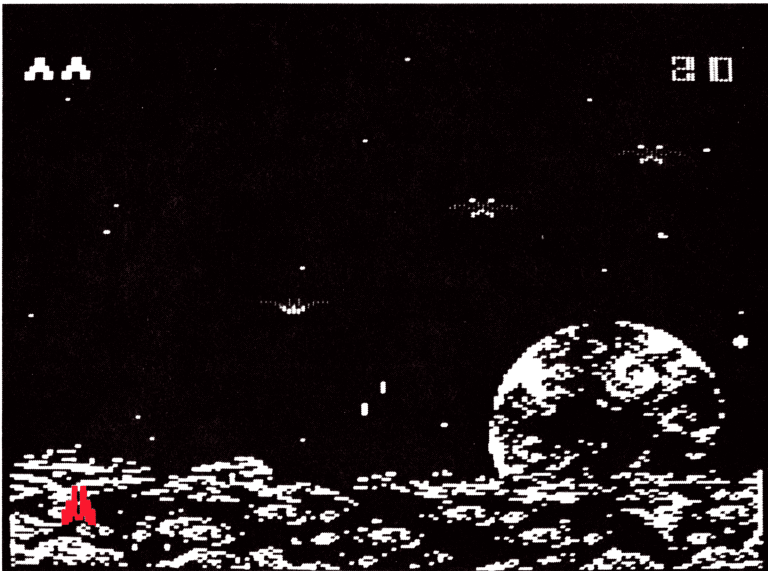
- | | |
|---|-----------------|
| ① | one player |
| ② | two player |
| ③ | straight firing |
| ④ | tracer firing |

In straight firing mode, the shots go straight up from the location of the laser gun. In tracer firing mode, the shots move with the laser gun.

You can change the firing mode during the game by pressing (3) or (4).

PLAYING THE GAME

After you choose the number of players and firing mode, press the red fire button to start playing.



Your reserve laser guns are in the upper-left corner. If you shoot all demons in a round, you receive an extra laser gun and proceed to the next round of play. (The game is over when all laser guns have been blown up.) As you shoot demons, the running total score is displayed in the upper-right corner.

Move the joystick to the left or right depending on which direction you want to move the laser gun. To shoot a demon, press the fire button.

Note on Tracer Shooting: If you are in tracer firing mode, a good strategy is to fire the laser gun and then pass directly below the demon you want to hit. The rays will trace you and hit the target, while you can avoid being hit from above by the demon.

In a two-player game, the left joystick player goes first. After Player #1 has completed Round 1 (or lost one laser gun), it's Player #2's turn. Player #2's reserve lasers are in the upper right corner while the score is displayed in the upper left corner.

After you complete two rounds of play, some demons that you hit split in two, increasing your danger of being hit. Also, the demon leader appears. Try to shoot any demons while they are in the shield protecting the leader so that you are not only scoring points but also penetrating the shield. After you shoot all the demons and break through the shield, aim for the eye of the demon leader. You must successfully shoot out the eye or lose a laser gun to proceed to the next round of play. You also receive an extra bonus for each demon leader you destroy.

Whenever you want to freeze all action, press **(HOLD)** to pause. To resume playing, press **(1)** or **(2)** depending on the number of players.

SCORING

Round	Big Demon	Split Demon	Diving Demon
1	10	—	—
2	20	—	—
3	30	15	—
4	40	20	80
5	50	25	100
6	60	30	120
7	80	40	160
8 +	100	50	200

ENDING OF A GAME

The game is over after all players have run out of laser guns. To continue playing after a game is over, press the black button to start at the last round reached or press the red button to play another game from the beginning (Round 1). If you do not press a button to indicate that you want to play another game, demo mode soon begins.



RADIO SHACK, A DIVISION OF TANDY CORPORATION

U.S.A.: FORT WORTH, TEXAS 76102
CANADA: BARRIE, ONTARIO L4M 4W5

TANDY CORPORATION

AUSTRALIA

91 KURRAJONG AVENUE
MOUNT DRUITT, N.S.W. 2770

BELGIUM

PARC INDUSTRIEL
5140 NANINNE (NAMUR)

U. K.

BILSTON ROAD WEDNESBURY
WEST MIDLANDS WS10 7JN